



# The new lightweight jack

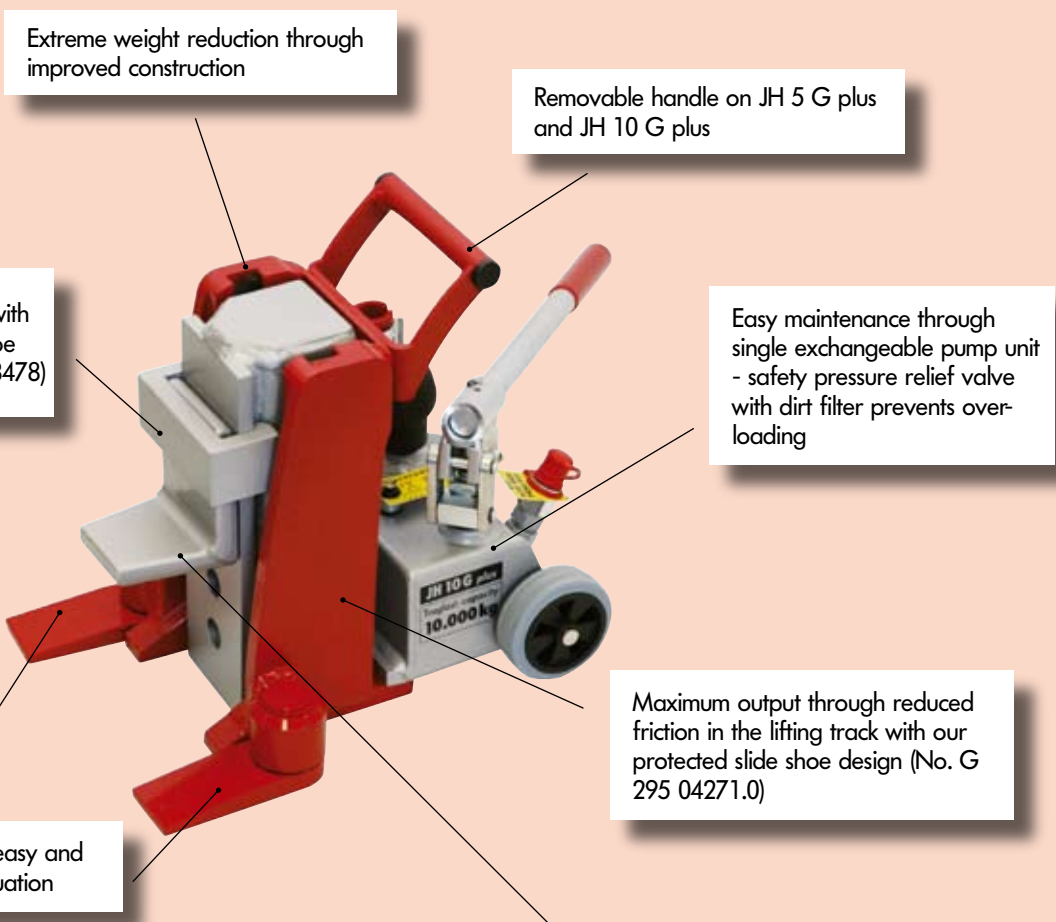
*Professional solutions for professionals*

■ **Innovative**

■ **Light**

■ **Compact**

■ **Strong**



Extreme weight reduction through improved construction

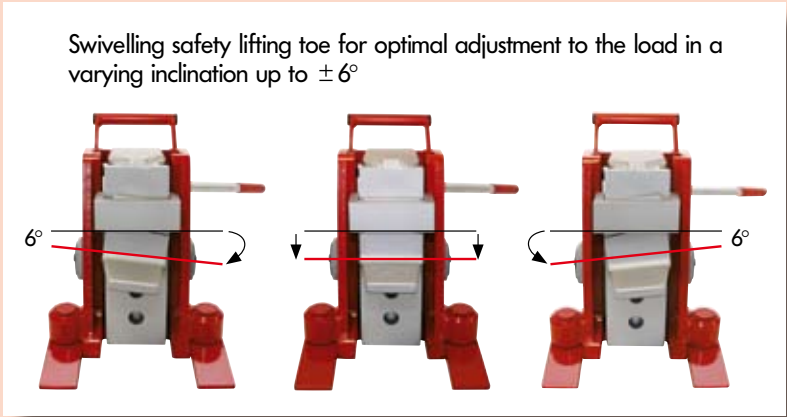
Removable handle on JH 5 G plus and JH 10 G plus

Work and lift safely with our patented lifting toe system (Pat.-No. 4413478)

Easy maintenance through single exchangeable pump unit - safety pressure relief valve with dirt filter prevents overloading

Maximum output through reduced friction in the lifting track with our protected slide shoe design (No. G 295 04271.0)

Sturdy swivelling feet - for easy and safe positioning in every situation





# Jack series JH-G plus

Load capacity up to 20 metric tons



**JH 5 G plus**

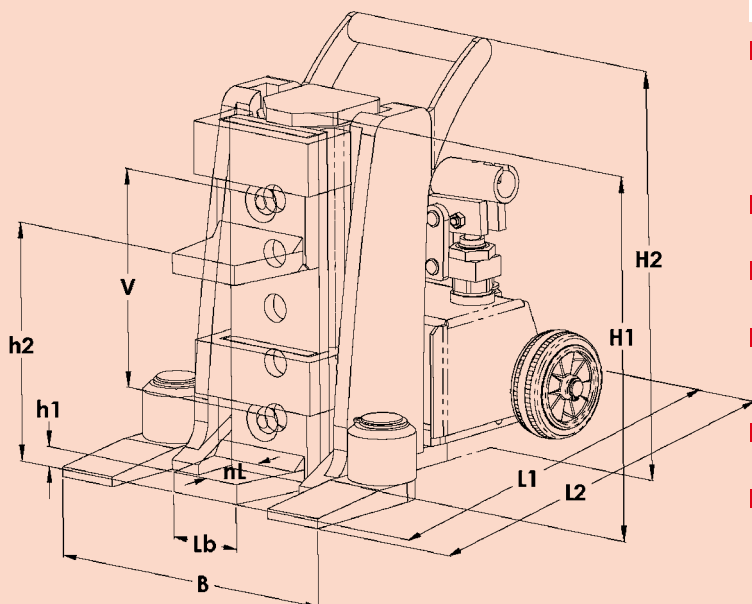


**JH 10 G plus**



**JH 10 G plus ku**

## Sketch



## Advantages in detail



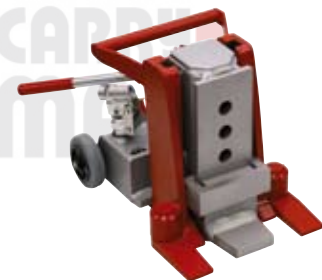
- Reduced friction through slide shoes that are mobile in their seats. Under application a larger contact surface guarantees better force distribution. The resulting advantages are less friction, more power and reduced wear of the lifting track than with conventional jacks (see picture 1 page 6).
- Reduced maintenance costs through easy to change slide shoes and exchangeable pump unit.
- Extremely lightweight with high performance through the use of high-quality material and innovative design changes.
- Continual adjustment to the load through swivelling safety toe. Secure stability in every situation even in lifted position (see picture 2 page 6).
- **JH 10 G plus ku** outfitted with dual side handles for positioning.
- Standard carrying handle for **JH 10 G plus ku** available as optional accessory (Sparepart no. 91 106 260-B).

Type	Sketch		JH 5 G plus	JH 10 G plus	JH10 G plus ku
Full load capacity*		kg / lbs	5 500 / 12 000	10 000 / 22 000	10 000 / 22 000
Stroke		mm / in	140 / 5.5"	150 / 5.9"	108 / 4.3"
Minimum lift toe height	h 1	mm / in	12 / 0.5"	15 / 0.6"	15 / 0.6"
Maximum lift toe height	h 2	mm / in	157 / 6.2"	180 / 7.1"	138 / 5.4"
Lift toe adjustment	V	mm / in	6 x 29 / 1.1"	5 x 41 / 1.6"	4 x 41 / 1.6"
Top plate height	H 1	mm / in	245 / 9.6"	275 / 10.8"	235 / 9.3"
Toe width front	Lb	mm / in	50 / 2.0"	60 / 2.4"	60 / 2.4"
Toe depth	nL	mm / in	50 / 2.0"	55 / 2.2"	55 / 2.2"
Length feet in front	L2	mm / in	326 / 12.8"	346 / 13.6"	346 / 13.6"
Length feet on side	L1	mm / in	311 / 12.2"	330 / 13"	330 / 13"
Width	B	mm / in	233 / 9.2"	247 / 9.7"	247 / 9.7"
Height	H2	mm / in	280 / 11"	310 / 12.2"	235 / 9.3"
Cylinder volume		L / in <sup>3</sup>	0,18 / 11.5"	0,3 / 19.6"	0,21 / 12.82"
Weight		kg / lbs	23 / 50.7	29 / 63.9	26 / 57.3
<b>Order number</b>			<b>01 050 052-G</b>	<b>01 100 102-G</b>	<b>01 100 103-G plus ku</b>

\*load on top plate

# Jack series JH-G plus

Load capacity up to 20 metric tons



**JH 15 G plus**



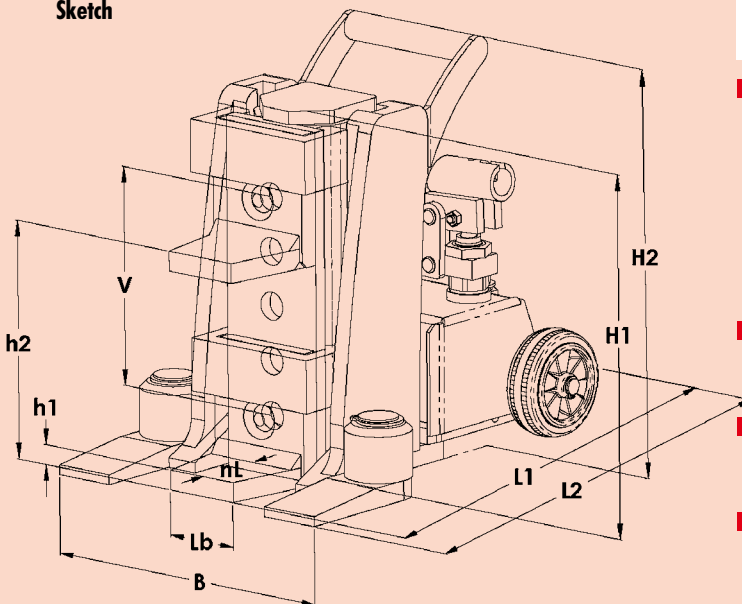
**JH 20 G plus**

Per request, all jacks available without internal hydraulic pumping unit for exclusive use with external pump.



**JH EX**

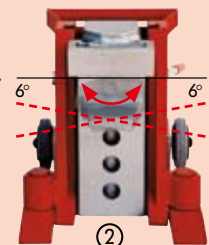
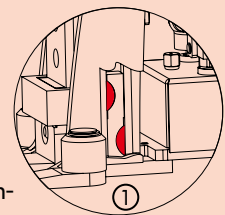
**Sketch**



## Advantages in detail



- Reduced friction through slide shoes that are mobile in their seats. Under application a larger contact surface guarantees better force distribution. The resulting advantages are less friction, more power and reduced wear of the lifting track than with conventional jacks (see picture 1).
- Reduced maintenance costs through easy to change slide shoes and exchangeable pump unit.
- Extremely lightweight with high performance through the use of high-quality material and innovative design changes.
- Continual adjustment to the load through swivelling safety toe. Secure stability in every situation even in lifted position (see picture 2).



Type	Sketch		JH 15 G plus	JH 20 G plus
Full load capacity*		kg / lbs	15 000 / 33 000	20 000 / 44 000
Stroke		mm / in	175 / 6.9"	190 / 7.5"
Minimum lift toe height	h 1	mm / in	20 / 0.8"	20 / 0.8"
Maximum lift toe height	h 2	mm / in	205 / 8.1"	225 / 8.9"
Lift toe adjustment	V	mm / in	5 x 46 / 1.8"	5 x 51 / 2"
Top plate height	H 1	mm / in	310 / 12.2"	340 / 13.4"
Toe width front	Lb	mm / in	70 / 2.8"	80 / 3.1"
Toe depth	nL	mm / in	70 / 2.8"	66 / 2.6"
Length feet in front	L2	mm / in	410 / 15.8"	425 / 16.7"
Length feet on side	L1	mm / in	401 / 15.8"	405 / 15.9"
Width	B	mm / in	322 / 12.7"	322 / 12.7"
Height	H2	mm / in	310 / 12.2"	340 / 13.4"
Cylinder volume		L/in <sup>3</sup>	0,5 / 30.2"	0,73 / 44.6"
Weight		kg / lbs	48 / 105.8	60 / 132.3
<b>Order number</b>			<b>01 150 102-G</b>	<b>01 200 102-G</b>

\*load on top plate



# Hydraulic jacks – JHS

Load capacity up to 20 metric tons



JSET 10/2



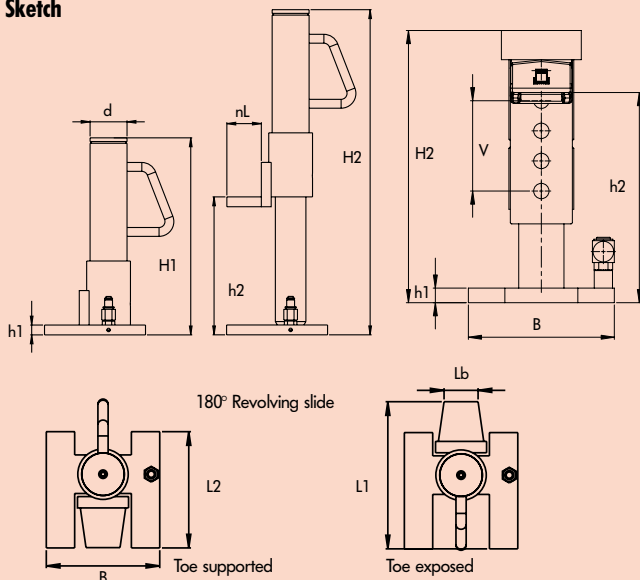
JSET 20/3



JSET 20/3 ku

NEW

## Sketch



## Advantages in detail



- 180° revolving slide – for use with or without lifting feet.
- High capacity at low weight.
- Separated pump unit, flexible use even in confined spaces, also in horizontal position.
- Swiveling lifting toe on **JHS 10 ku** assures optimal adjustment to the load, along with safe and stable support even in raised position (see picture 2 page 6).

## Hydraulic jacks with pump and hoses in one set

NEW

Set type	JSET 10/2	JSET 20/3	JSET 20/3 ku
Jack	2 x JHS 5	2 x JHS 10	2 x JHS 10 ku
Hose	2 x JS 2	2 x JS 3	2 x JS 2
Pump	JP 16	JP 26	JP 16
<b>Order number</b>	<b>20 410 200-S</b>	<b>20 420 301-S</b>	<b>20 420 305-S</b>

## Single hydraulic jacks JHS

Type	Sketch		JHS 5**	JHS 10**	JHS 10 ku
Full load capacity		kg / lbs	5 000 / 11 000	10 000 / 22 000	10 000 / 22 000
Minimum lift toe height	h 1	mm / in	15 / 0.5"	20 / 0.8"	20 / 0.8"
Maximum lift toe height	h 2	mm / in	245 / 9.6"	260 / 10.2"	288 / 11.3"
Lift toe adjustment	V	mm / in			4 x 41 / 1.6"
Top plate height	H 1	mm / in	350 / 13.8"	370 / 14.6"	265 / 10.4"
Maximum top plate height	H 2	mm / in	580 / 22.8"	630 / 24.8"	373 / 14.7"
Toe width front	Lb	mm / in	45 / 1.8"	60 / 2.4"	60 / 2.4"
Useable toe depth	nL	mm / in	40 / 1.6"	55 / 2.2"	55 / 2.2"
Diameter top plate	d	mm / in	55 / 2.2"	80 / 3.1"	80 / 3.1"
Length toe supported	L2	mm / in	170 / 6.7"	205 / 8.1"	205 / 8.1"
Length toe exposed	L1	mm / in	220 / 8.7"	260 / 10.2"	260 / 10.2"
Width	B	mm / in	145 / 5.7"	200 / 7.9"	265 / 10.4"
Cylinder volumen		L / in <sup>3</sup>	0,22 / 13.42"	0,51 / 31.12"	0,21 / 12,82"
Weight		kg / lbs	10 / 22	19 / 42	17 / 38
<b>Order number</b>			<b>01 020 050-0</b>	<b>01 020 101-0</b>	<b>01 020 105-0</b>

NEW

Please refer to page 10 for adjustable manual pumps and hydraulic hoses, for electrical pumps to page 11.

\*\*Registered design number: G 93 12 940.8



# Jack series JH-P

Load capacity up to 50 metric tons



JH 13 P

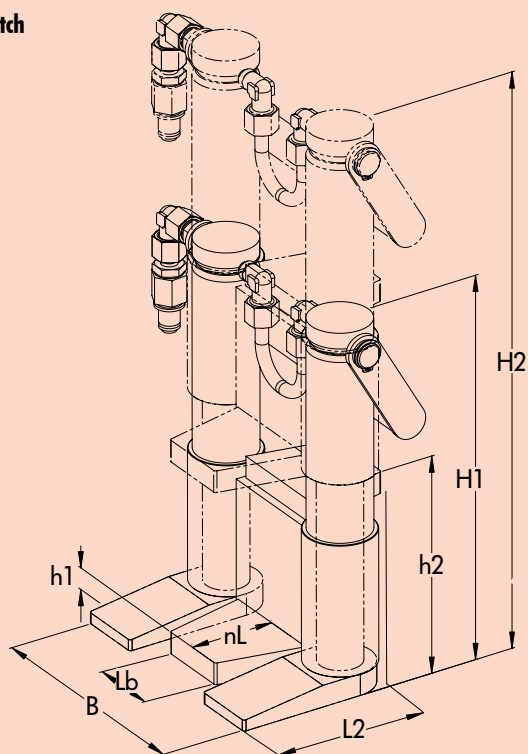


JH 30 P



JH 50 P

### Sketch



### Advantages in detail

- High capacity at low weight.
- Swivelling feet for perfect positioning.
- Even balancing of load and ideal weight distribution through integrated twin cylinder system.
- Convenient Push back / Transport cart will transport and retract jack effortlessly (included JSET 30/50).



Application with „Primus“ and central pump

Please refer to page 10 for adjustable pumps and hydraulic hoses, for electrical pumps to page 9.

Type	Sketch		JH 13 P**	JH 30 P**	JH 50 P**
Full load capacity*		kg / lbs	13 000 / 28 000	30 000 / 66 000	50 000 / 110 000
Stroke		mm / in	160 / 6.2"	200 / 7.8"	250 / 9.8"
Minimum lift height (deep toe)	h 1	mm / in	18 / 0.7"	25 / 1.0"	35 / 1.4"
Minimum lift height (high toe)	h 2	mm / in	135 / 5.3"	185 / 7.3"	275 / 10.8"
Top plate height	H 1	mm / in	303 / 11.9"	455 / 17.8"	542 / 21.2"
Maximum top plate height	H 2	mm / in	463 / 18.2"	655 / 25.8"	792 / 31.6"
Toe width front	L b	mm / in	60 / 2.4"	105 / 4.1"	100 / 3.9"
Useable toe depth	n L	mm / in	50 / 2.0"	70 / 2.8"	85 / 3.3"
Length toe supported	L 2	mm / in	170 / 6.7"	255 / 10.0"	350 / 13.8"
Width	B	mm / in	210 / 8.3"	305 / 11.9"	380 / 14.9"
Cylinder volume		L / in <sup>3</sup>	0,4 / 24.41"	1,13 / 68.96"	2,51 / 153.29"
Weight		kg / lbs	15 / 33	51 / 112.4	105 / 231.5
<b>Order number</b>			<b>01 020 130-P</b>	<b>01 020 300-P</b>	<b>01 020 500-P</b>

\*On top plate \*\*Eur. patent-no. 1325882



# Set series JH-P

Load capacity up to 50 metric tons



**JSET 13/2**



**JSET 30/2**



**JSET 50/3**



Application with Primus JH 30 P and electrical pump JPE 30

## Advantages in detail



- See also page 6 for additional advantages.
- Job flexibility through separated lifting and pumping unit.
- Effortless transport and return to original position of jack through combined push back / transport unit (included JSET 30/50).
- Complete jack set includes all necessary hoses. Unpack and ready for use.

Push back /  
transport cart  
standing



**JRS 1**

**01 001 030-T**



Push back /  
transport cart  
transporting

### Electrical pumps without hoses

Type		JPE 30 NVR	JPE 55 NVR
Oil volume	L	7,6 / 4,8	9,5 / 8,4
Working pressure	bar / psi	520 / 7540 psi	520 / 7540 psi
Connections	pcs	2	2
Flow rate high pressure	h / min.	3,9 - 7 bar	7,1 - 50 bar
Flow rate high pressure	h / min.	0,33 - 520 bar	0,95 - 520 bar
Motor facts		230 V, 50 Hz, 5 A	230 V, 50 Hz, 13 A
Dimensions L x W x H	mm / in	530 x 300 x 560 / 20.87 x 11.81 x 22.05"	530 x 300 x 560 / 20.87 x 11.81 x 22.05"
Length of hoses	mm / in	variable	variable
Weight with oil on cart	kg / lbs	40 / 88	40 / 88
Usable jacks		any hydraulic jacks	any hydraulic jacks
<b>Order number</b>		<b>03 300 200-E</b>	<b>03 550 200-E</b>

### Hydraulic jacks with pump and hoses in one set

Type	JSET 13/2	JSET 30/2	JSET 50/3
Jack	1 x JH 13 P	1 x JH 30 P	1 x JH 50 P
Hose	1 x JS 2	2 x JS 2	2 x JS 3
Pump	1 x JP 16	1 x JPE 30 NVR	1 x JPE 55 NVR
Push back / Transport unit	-	1 x JRS 1	1 x JRS 1
<b>Order number</b>	<b>20 413 200-P</b>	<b>20 430 200-P</b>	<b>20 450 300-P</b>



# Hand pumps JP and hydraulic hoses JS

Light and powerful



JP 16



JP 26

## Uses and applications for hand pumps

Jacks	JP 16	JP 26
JH 5 G plus	2x	2x
JH 10 G plus	2x	2x
JH 15 G plus	1x	2x
JH 20 G plus	1x	2x
JHS 5	2x	2x
JHS 10	1x	2x
JHS 10 ku	2x	2x
JH 13 P	2x	2x
JH 30 P	-	1x
JH 50 P	-	-

## Recommended for use with two hydraulic jacks

### Advantages in detail

- Sturdy construction, yet lightweight and easy to handle.
- Pressure limiting valve provides safety against overloading.
- Optimally compatible with our hydraulic jacks.
- Pumps are equipped with integrated quick-lift for faster working.

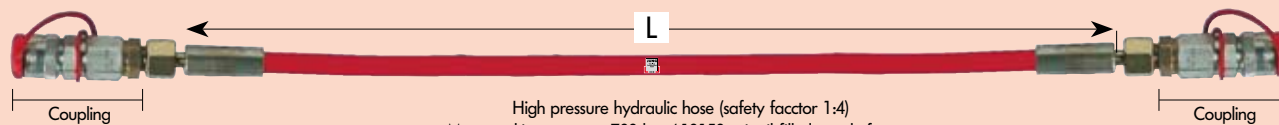
▶ See pages 4-8 for compatible hydraulic jacks.

## Hydraulic hand pumps without hoses

Type		JP 16	JP 26
Oil volume complete/usable	L	1,1 / 1,0	2,1 / 2,0
Working pressure	bar / psi	520 / 7540 psi	520 / 7540 psi
Connections	pcs	2	2
Dimensions L x W x H	mm / in	780 x 230** x 150 / 30.71 x 9.05 x 5.91"	840 x 230** x 170 / 33.07 x 9.05 x 6.69"
Length of hoses	mm / in	variable*	variable*
Weight with oil on cart	kg / lbs	7 / 15	11 / 24
<b>Order number</b>		<b>02 160 000-P</b>	<b>02 260 000-P</b>

\*available up to 15 000 mm \*\*Wide foot plate

## Suitable high pressure hydraulic hoses for all of our manual and electric pumps



High pressure hydraulic hose (safety factor 1:4)  
Max. working pressure 700 bar / 10150 psi, oil-filled, ready for use

Hose type		JS 2	JS 3	JS 4	JS 6	JS 15
Drip free couplings	no.	2	2	2	2	2
Length	L=mm / in	2 000 / 78.7"	3 000 / 118.1"	4 000 / 157.5"	6 000 / 236.2"	variable*
<b>Order number</b>		<b>15 200 002-0</b>	<b>15 300 002-0</b>	<b>15 400 002-0</b>	<b>15 600 002-0</b>	<b>15.....00-0**</b>

\*available up to 15 000 mm

\*\*.....enter L in mm



# Electrical hydraulic pumps JPA and JPE

*Powerful and quick*



**JPA 5**



**JPE 30 NVR**



**JPE 30/4 NVR**



Electric pump JPE 30-NVR with 2 jacks in operation

## Advantages in detail



- Flexible connections with drip free rapid closure valves.
- One oil circuit capable of supplying two hydraulic jacks.
- Easy handling.
- Maximum safety during operation through cable remote control.
- Sturdy two stage electric pumps available in different versions.
- Easily controllable: JPE 30-NVR now with precision lowering regulator.
- Includes transport cart for easy and safe transport.

**NEW**

Recommendation: When lifting one side of a load with 2 jacks use external manual pump type JP16/26 (see page 9), electrical pump type JPE 30 NVR or battery pump JPA 5.

Please see pages 4-6 and 8 for suitable jacks

### Electrical pumps without hoses

Type		JPA 5	JPE 30 NVR	JPE 30/4 NVR
Oil volume	L	1,0 / 1,0	7,6 / 4,8	7,6 / 4,8
Working pressure	bar	520	520	520
Connections	pcs	1*	2	4
Flow rate high pressure	h / min	1.9 - 30 bar	3.9 - 7 bar	3.9 - 7 bar
Flow rate high pressure	h / min	0.1 - 520 bar	0.33 - 520 bar	0.33 - 520 bar
Motor facts		12 V DC	230 V, 50 Hz	230 V, 50 Hz
Dimensions L x W x H	mm / in	330 x 197 x 203 / 13 x 7.8 x 8"	530 x 300 x 560 / 20.8 x 11.8 x 22"	530 x 300 x 610 / 20.8 x 11.8 x 24"
Length of hoses	mm / in	variable	variable	variable
Weight with oil and cart	kg / lbs	9,1 / 20	40 / 88	45 / 99.2
Usable jacks		2x JHS 5 / JH 5G plus / JHS 10 ku	any hydraulic jacks	any hydraulic jacks
<b>Order number</b>		<b>03 102 001-E</b>	<b>03 300 200-EU</b>	<b>03 300 004-EU</b>

\*2 connections as option available

#### JPA 5

##### Standard version

with 1 hydraulic connection. Accessories including rechargeable battery with carrying case and cable available under order number 03 102 002-E.

#### JPE 30 NVR

##### Standard version

Equipped with 2 hydraulic connection nipples, 1 manometer and precision lowering control.

#### JPE 30/4 NVR

##### Extended version

Equipped with connection block JNB 2-E, with lowering speed control valve and 4 x JNB 1-E. Other versions available on request.

Other options on request available.